

48 Burrell Close, Edgware, HA8 8YZ
Offers In Excess Of £215,000

A Chain Free One Bedroom Ground Floor Flat in the heart of Edgware.

Accommodation comprises One Bedroom, Open Plan Kitchen/Reception Room and a bathroom.

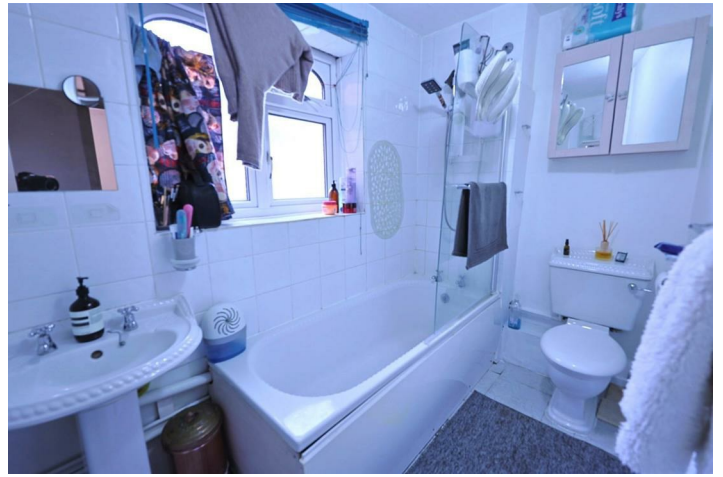
Located in this popular Development with access to multiple road links, and local shopping at Glengall Road.

An early viewing is highly recommended via vendor's sole agents Benjamin Stevens.

Exterior



Bathroom 4'11" x 8'10" (1.50 x 2.70)



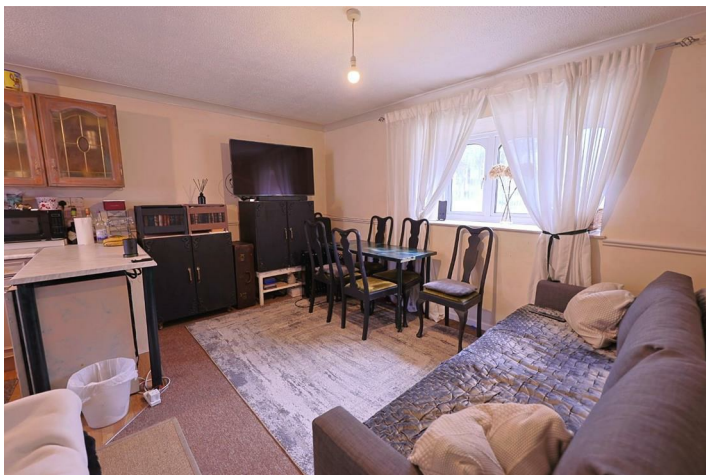
Bedroom 7'10" x 9'7" (2.39 x 2.94)



Kitchen



Reception Room/Open Plan Kitchen 15'9" x 13'9" (4.82 x 4.21)



Tenure

Lease- 85 years remaining
Ground Rent- £110pa
Service Charge- £1,394.77pa

Floor Plan

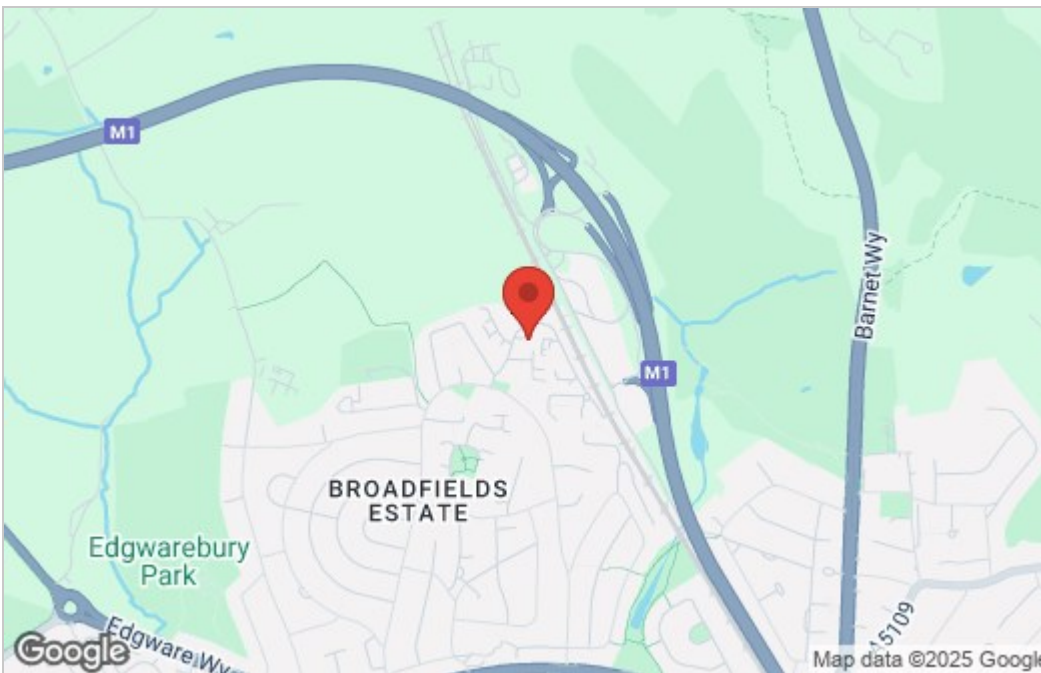
GROUND FLOOR 370.88 sq. ft.
(34.46 sq. m.)



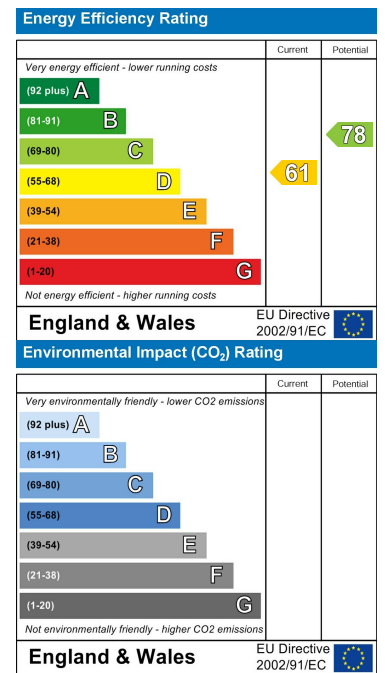
TOTAL FLOOR AREA : 370.88 sq. ft. (34.46 sq. m.) approx.

Whilst every attempt has been made to ensure the accuracy of the floorplan contained here, measurements of doors, windows, rooms and any other items are approximate and no responsibility is taken for any error, omission or misstatement. This plan is for illustrative purposes only and should be used as such by any prospective purchaser. The services, systems and appliances shown have not been tested and no guarantee as to their operability or efficiency can be given.
Made with Metropix 02019

Area Map



Energy Efficiency Graph



These particulars, whilst believed to be accurate are set out as a general outline only for guidance and do not constitute any part of an offer or contract. Intending purchasers should not rely on them as statements of representation of fact, but must satisfy themselves by inspection or otherwise as to their accuracy. No person in this firm's employment has the authority to make or give any representation or warranty in respect of the property.



Edgware Office- 194 Station Road, Edgware, HA8 7AT. Tel: 020 8958 1118
Bushey Heath Office- 59 High Road, Bushey, WD23 1EE. Tel: 020 8950 7777
www.benjaminstevens.co.uk